



# FLOOR REPORT

Norway September 2017

This report is based on a selection of new and old AcryliCon floor installations during a three-day visit to Norway. None of the floors were cleaned beforehand, so demonstrate real-life performance during daily operations.

The best way for potential clients to know how an AcryliCon floor really performs is to visit one and see with their own eyes ... seeing is believing!





DAY 1

## OSLO – TRAIN STATION

The day started with a walk to Oslo Nationaltheater train station, the second busiest railway station in Norway with capacity for 40,000 visitors per day. Operating the Airport Express train service, platforms are around 250 meters long and were installed with **AcryliCon Flake System** in 2006.

Are AcryliCon floors easy to clean?

Something that was noticeable during the visit is how clean the floors were after 10 years of use. A problem for many train platforms or public walkways is chewing gum and luggage wheel marks, but AcryliCon floors are really easy to keep clean using a standard scrubbing, detergent and drying machine.



DAY 1

# OSLO – ALNA CENTRE CAR PARK

The next location was a car park where **AcryliCon MultiGrip System** was recently installed. Acryli-Con Industrigulv AS designed the parking layout, gaining an extra eight car parking spaces over the previous design ... we really do provide solutions for our clients!

Entrance and exit ramps were created using **AcryliCon Levelling Screed System**, a fast cure mortar system ready for overlay within two hours!

**AcryliCon Pigmented Wall System** was used for the surrounding curbs, adding safety and brightness to what is usually a dark environment.

By having two exit and entrance routes the car park was fully operational to customers during installation, causing minimal disruption and loss of revenue for the client.







DAY 1

## OSLO – FISH MARKET

How long do our floor systems last? The images above show a thirty-eight-year-old AcryliCon Décor floor installed at Oslo Fishmarket in 1979. Up until recently, this was their main production area which is currently being renovated. The coving is still strong, bonded to the floor and walls with absolutely no cracks at all, and the floor shows hardly any signs of wear after decades of use.

One area had a concrete crack caused by underground movement but due to the excellent bond that AcryliCon provides, the floor had not started to delaminate. The drains have started to rust but the AcryliCon floor around it was still in perfect condition.

Over 1000 m<sup>2</sup> of **AcryliCon Décor System** have been installed here, always choosing AcryliCon as their flooring provider each time their business expanded. These floors have been wet 24 hours a day, 365 days per year, every year since the floors were installed.

The fish processing area had recently been moved upstairs with **AcryliCon Décor Floor and Wall System** installed for a full floor-to-ceiling hygienic processing area. After speaking to the client, he was clearly impressed and fully satisfied with his floors but also with the excellent service provided by AcryliCon Industrigulv AS over the years.





DAY 1

## OSLO – MEDICAL SCHOOL KITCHEN

Following the car park visit, we drove a short distance to inspect two commercial kitchens. The first was at a Medical School using **AcryliCon Décor System** and **AcryliCon Wall System**. The head chef was extremely happy with the cleanability of the floor and walls.

The second kitchen was at Oslo University where they recently chose **AcryliCon Décor System** for their kitchen extension. Their first AcryliCon floor was installed in 2001.



DAY 2

# ALESUND – QUALITY HOTEL WATERFRONT CAR PARK

After traveling 550 km by car from Oslo to Alesund we finished the first day at the Waterfront hotel car park, stepping straight out onto an AcryliCon floor... what a nice way to be greeted!

We later found out this 1700 m<sup>2</sup> car park was installed with **AcryliCon Décor System** in 2013. On close inspection, the floor had worn well against studded tires used in Norway during the winter months.









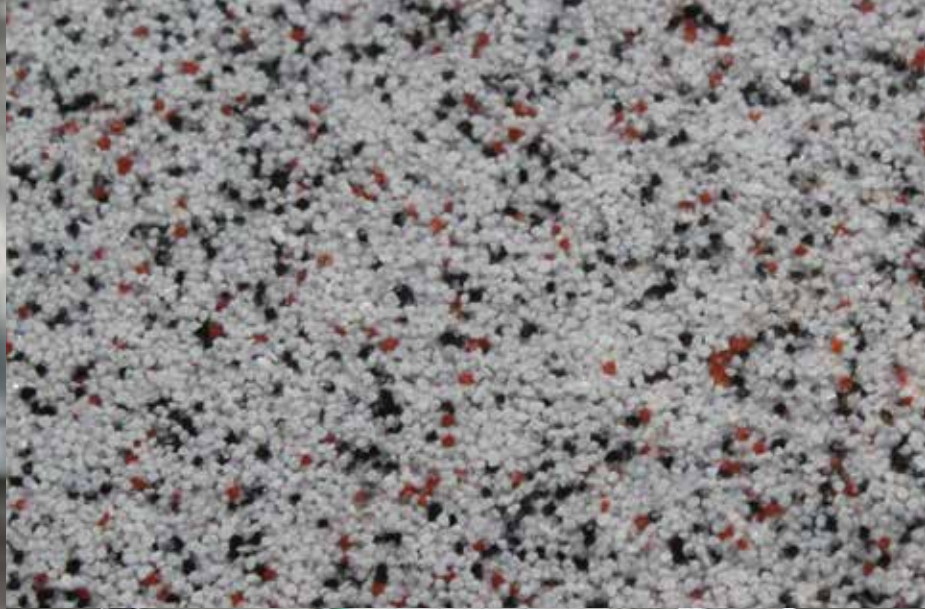
DAY 2

## ALESUND – FJORDLAKS AS

The next company to visit was Fjordlaks AS fish processing facility where AcryliCon floors were specified each time the business expanded. In total, over 30,000 m<sup>2</sup> have been installed between 1997-2017. These floors are subjected to ice cold water, salt, steel containers and constant forklift driving every day of the year.

The 8000 m<sup>2</sup> floor pictured above was installed in 1997, providing twenty years of service with any need for repairs. This is why we pride ourselves in providing long-lasting floors. The customer was delighted with the first AcryliCon installation in 1997, so always preferred AcryliCon as their flooring provider when the business expanded.





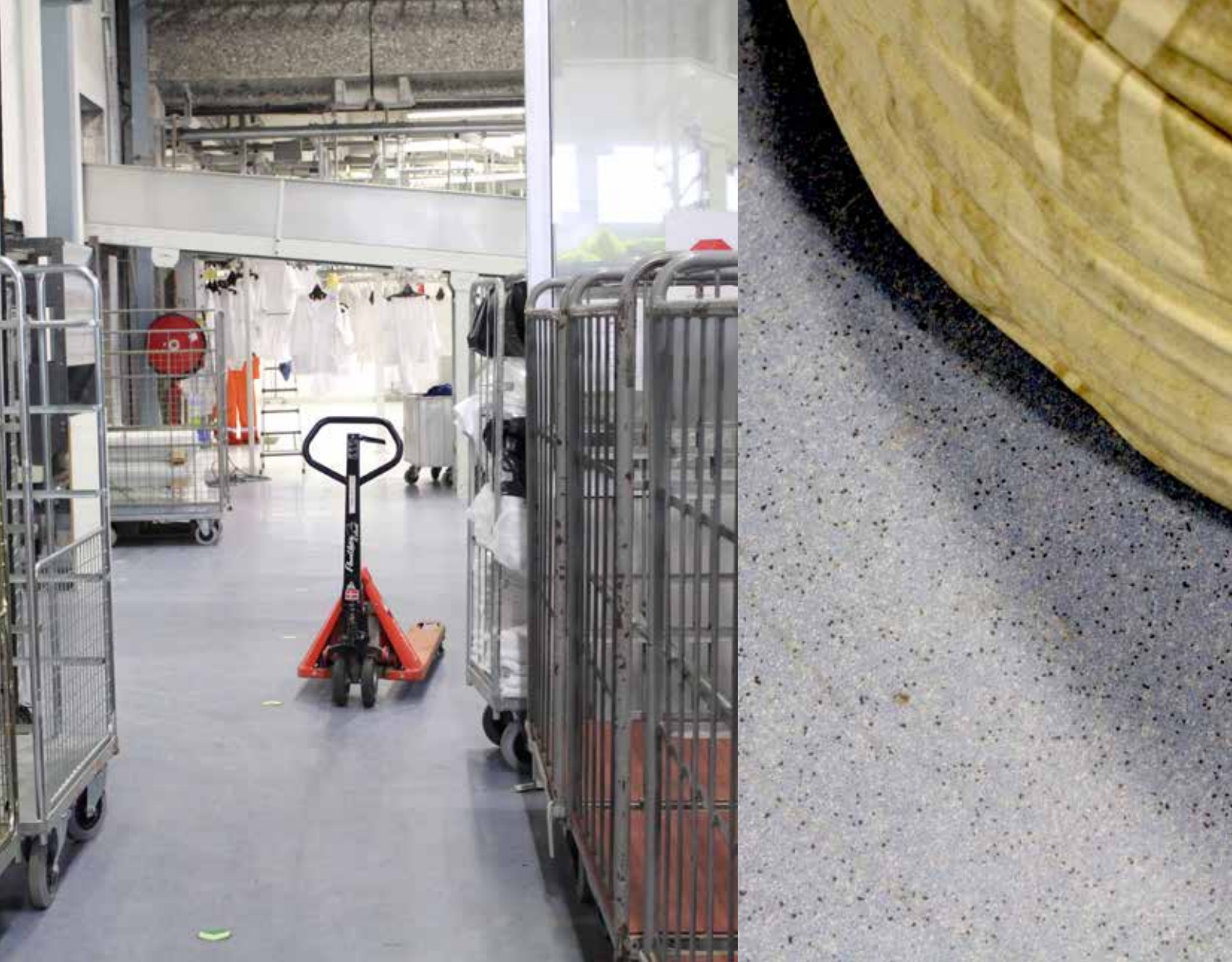
DAY 2

## ALESUND – HOTEL BROSUNDET BRYGGEN

The next destination was a 5-star hotel kitchen with 130 m<sup>2</sup> **AcryliCon Décor System** installed in 2015. The bespoke colour scheme (grey, red, black) was chosen by the client.

This installation included major ground and preparation work. **AcryliCon Levelling Screed System** was used to raise the floor level and to create falls to drains.





DAY 2

# ALESUND – NOR TEKSTIL SERVICE AS

This laundry and production hall is 650 m<sup>2</sup> in size and installed in just one weekend in 2016 using our AcryliCon Décor System.

A complicated job that involved hand trowelling around machines, pipes, and other tight areas but the client was delighted to open for business again on Monday morning!









DAY 2

## ALESUND – COOP OBS BYGG

The next visit was to a large retail chain selling hardware/DIY products. Initially, the AcryliCon quotation was refused on price and the customer chose a competitor over AcryliCon. After only a few months their floor had totally failed, so they contacted AcryliCon Midt & Vest-Norge AS for help.

1800 m<sup>2</sup> of **AcryliCon Flake System** was installed in the retail area in 2014 and 860 m<sup>2</sup> of **AcryliCon Variant Paint System** for the hardware area in 2015. AcryliCon also created a bespoke floor logo in the shop entrance for the client. In their hardware area, many of the goods for sale are moved by pallet trucks, which showed minimal signs of wear or abrasion.





DAY 2

## ALESUND – BERG LIPIDTECH AS

BLT is an industrial scale manufacturer of food grade refined fish oils and purified omega-3 fatty acids for the world's food supplement and pharmaceutical markets.

In 2006 their 2500 m<sup>2</sup> processing facility was installed using **AcryliCon Décor System**, with extra slip resistance specified to minimise potential slips from employees working with oily fish products. The customer is very happy with AcryliCon, so they asked us to install our floor systems in their other buildings.



DAY 2

## ALESUND – VEGSUND SLIP AS

A fishing trawler called Vonar Aalesund was the next AcryliCon installation to visit. The boat is currently docked and being refurbished, so a perfect opportunity to go on-board and see the installation that took place in 2012.

Fibreglass arming was used underneath the **AcryliCon Décor System** to help deal with the movement of the boat structure. The floor system was hand-trowelled in tight areas underneath all the fish processing machines.





DAY 2

# ALESUND – ØDEGÅRD KAROSSERI AS

1000 m<sup>2</sup> of **AcryliCon Décor System** was installed at this car workshop over eighteen years ago (1999). Daily operations mean engine and brake fluids are frequently spilled, and tools or service parts are dropped onto the floor.

After all these years of use, the floor still looks in great condition ... pictures speak louder than words!



DAY 3

## TRONDHEIM – NORTURA

Another 300 km drive and two ferry crossings later, we started day 3 in Trondheim. Our first visit was Nortura, Norway's biggest meat processing company. The 11,000 m<sup>2</sup> building was installed with AcryliCon Décor System in all production/

storage areas and **AcryliCon Variant System** installed in the service areas during 2009.

No photos of the production were allowed that day due to an unscheduled health and safety inspection.





DAY 3

## TRONDHEIM – NORTURA

Although no photographs were allowed inside the processing area, it was clear this customer was extremely happy with the durability of the AcryliCon floor. The picture (above left) was taken at a previous visit to their production facility.

The floors here are subjected to extreme conditions, such as blood, acids, hot water, forklifts, and cleaning chemicals. Over 70 cows and 350 sheep are processed here every day, and the floors have withstood the test of time.



DAY 3

## TRONDHEIM – LERØY FISH PROCESSING

Next stop was Lerøy Fish processing (formally known as Larsen Fish processing).

**AcryliCon Décor System** was installed here in 1989 and since then the floors have been wet nearly all year round. We popped in during their daily operation so the floors have not been cleaned.

In 2004 we took a picture of a drain inside their facility, and now the same drain is photographed in 2017 with Bjørn Hegstad, AcryliCon founder, and current CEO.





DAY 3

## TRONDHEIM – LERØY FISH PROCESSING

The photo (above right) shows the drain photographed in 2004. The floor around the busy loading bay looks dirty through lack of cleaning but there's no sign of any damage or delamination ... Not bad for a 28-year-old floor! One photo shows an example of customer damage to the coving that has not spread or become worse over the years. Another photo taken proves AcryliCon has

a nonporous surface, even after all these years of use. The forklift tires have pushed the water outwards leaving dry tire marks. If porous, it would be wet underneath the tires because water would be trapped inside the pores. This means the AcryliCon floor construction is still intact and has not degraded over time. There was also no smell coming from the floor, another sign of a non-porous surface!



DAY 3

# TRONDHEIM – NOR LINES FISH STORAGE

By coincidence, we found another AcryliCon floor (unplanned visit) next door to Lerøy fish processing. This one was a recent AcryliCon Décor installation.



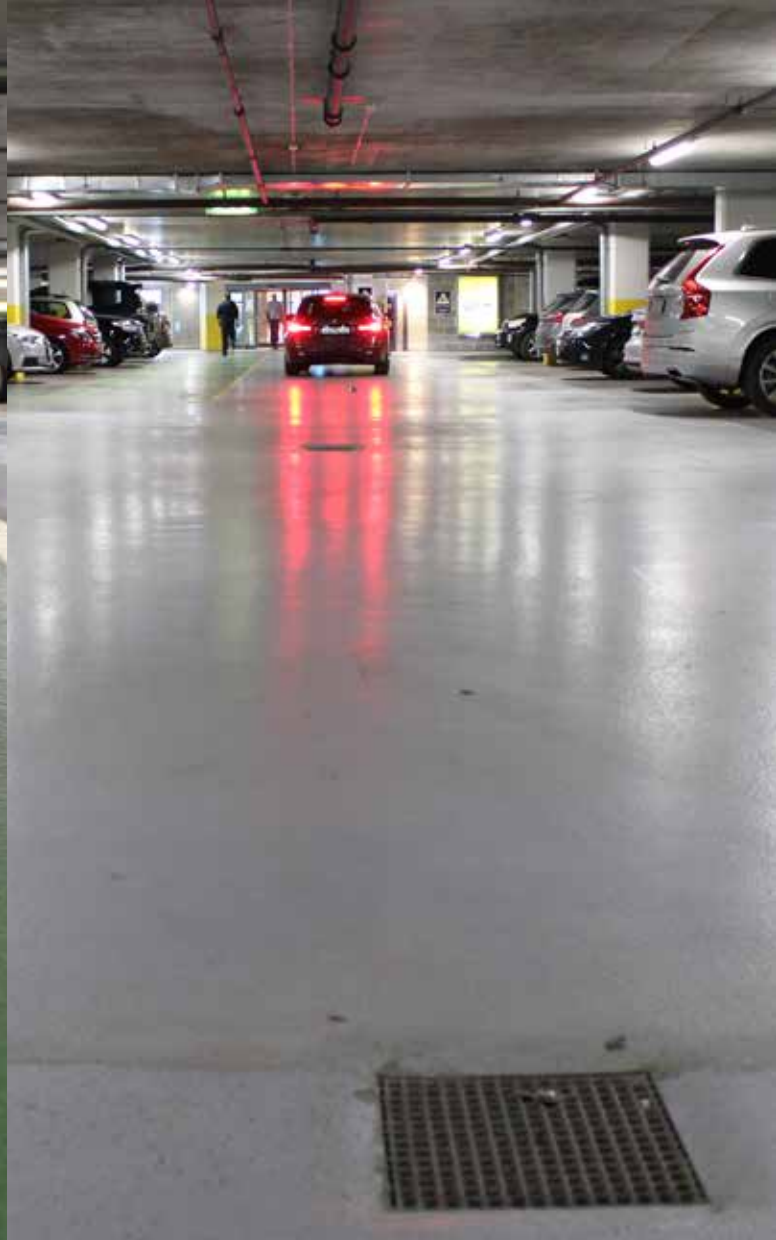


DAY 3

# TRONDHEIM – RADISSON BLU ROYAL GARDEN HOTEL

After finding some memorabilia at the AcryliCon Trondheim office, we visited the venue of AcryliCon's 40th Anniversary, where nearly 300 employees and guests from around the world attended.

These photos were taken in their hotel kitchen along with a Viking miniature - AcryliCon's mascot since 1977.



DAY 3

## TRONDHEIM – SOLSIDEN CAR PARK

The final stop on our trip was a visit to Solsiden Car Park where the AcryliCon Variant System was eleven years old. With a yearly cycle of studded snow tires, freezing temperatures, and heavy traffic, the floors show only a small amount of wear.

In comparison, we visited another car park installed by one of our competitors. The car park had been coated and recoated three times in two years because of delamination, potholing, and abrasion... exactly the same conditions as the AcryliCon floor at Solsiden Car Park.





Industrieböden



0049 38757/59 550



info@AcryliConpolymers.com



www.AcryliConpolymers.com